

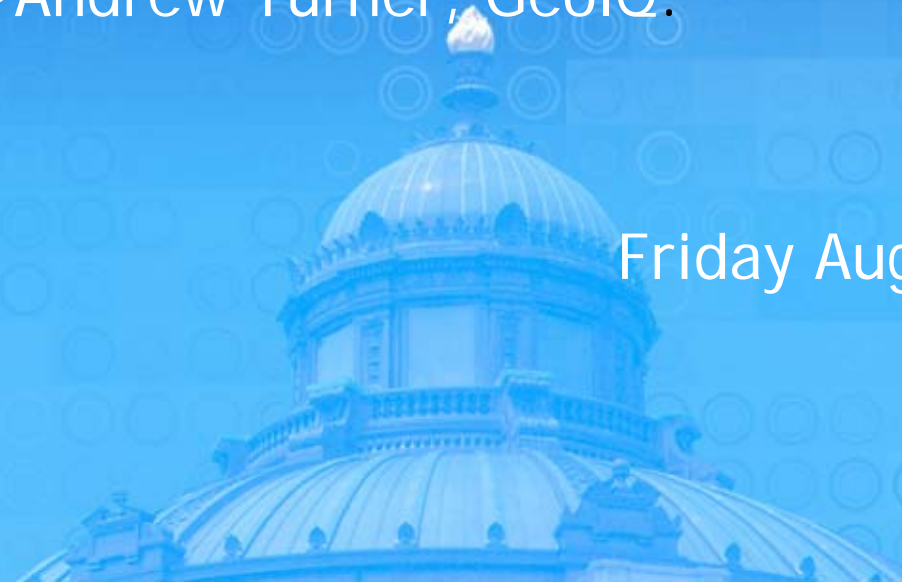


Geospatial Preservation: The State of the Landscape

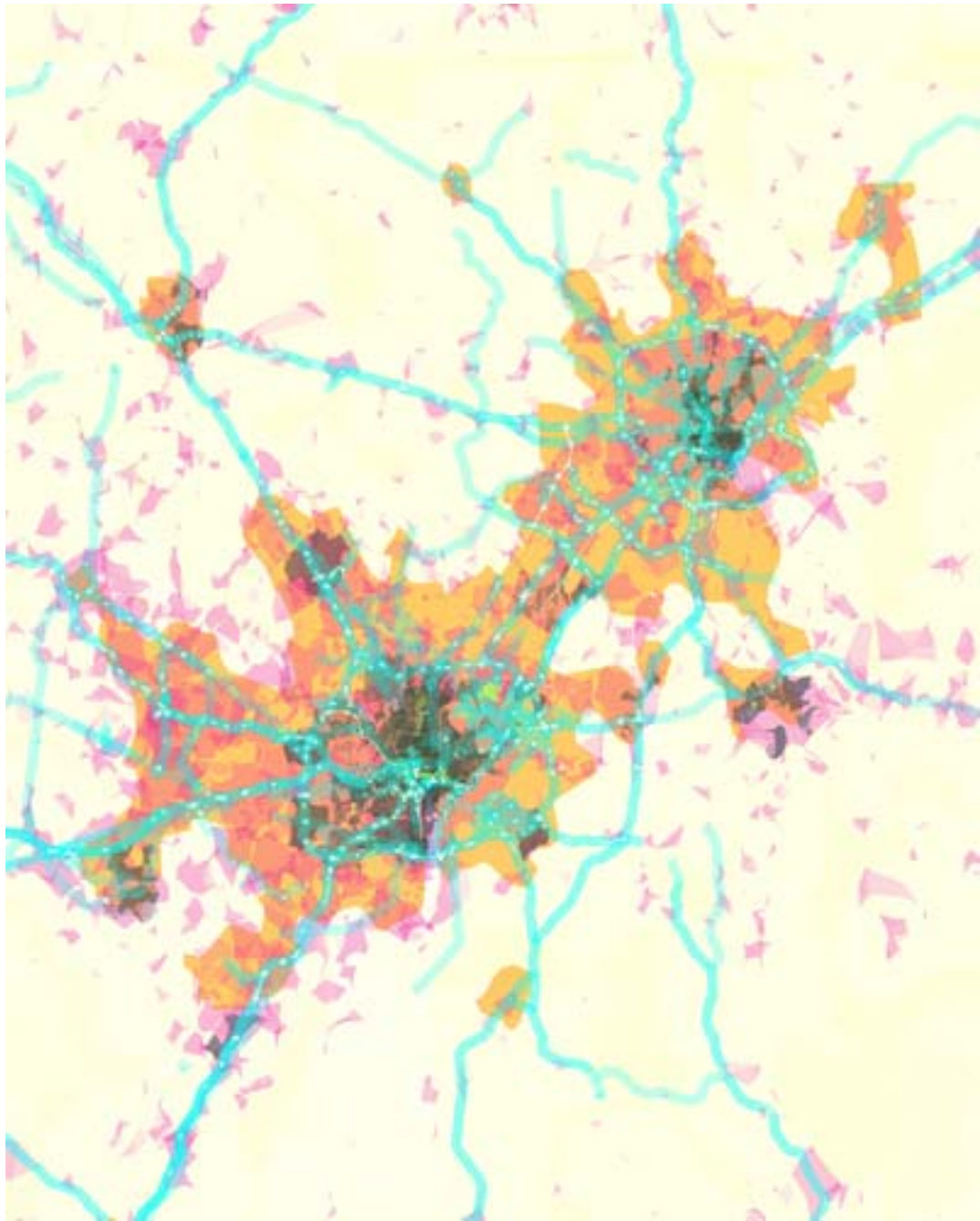


- John Faundeen, USGS, EROS Science Center
- Butch Lazorchak, Library of Congress
- Steve Morris, North Carolina State University Libraries
- Andrew Turner, GeolQ.


SAA 2011
Friday August 26, 2011
1:00 p.m.







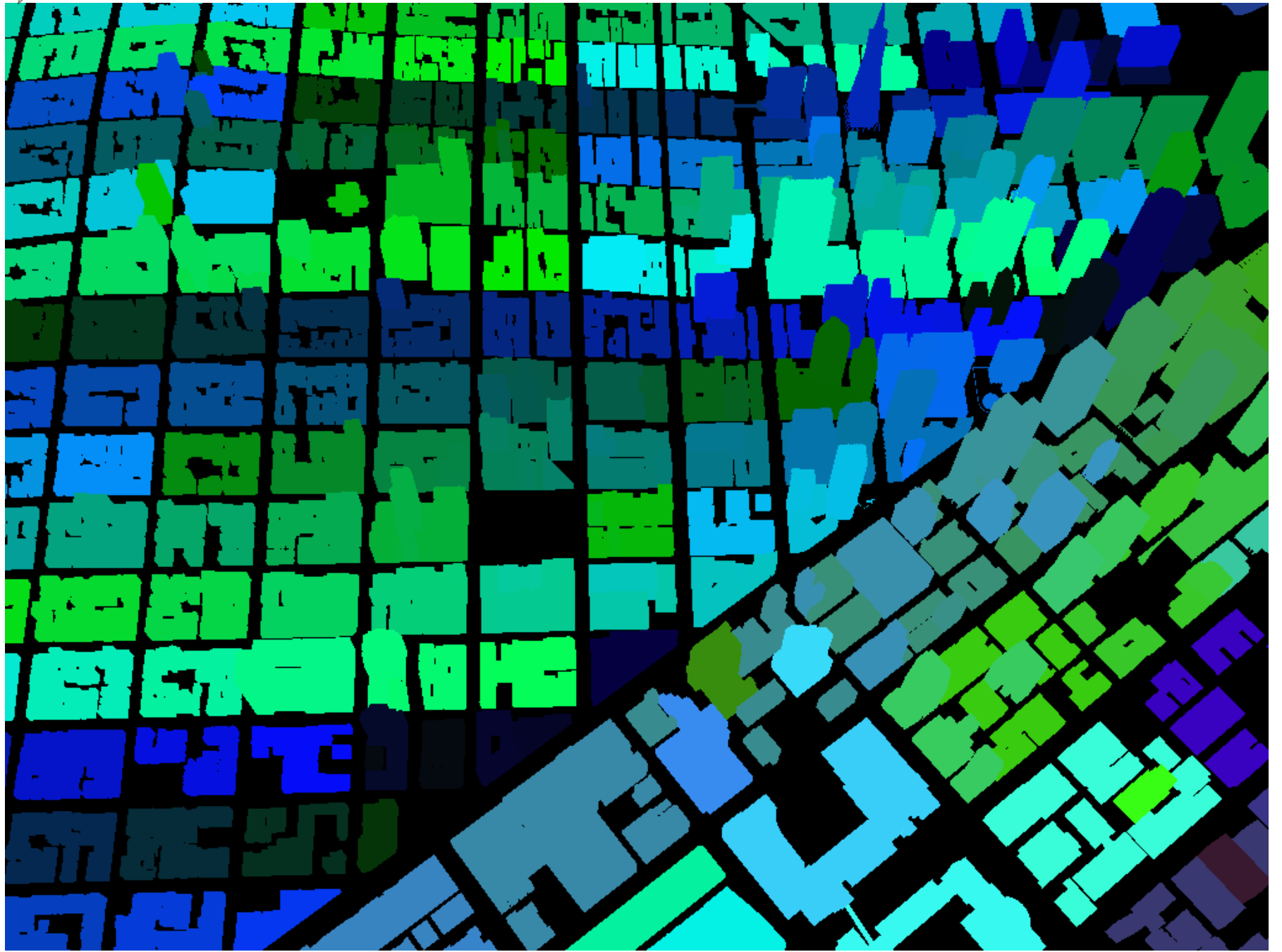


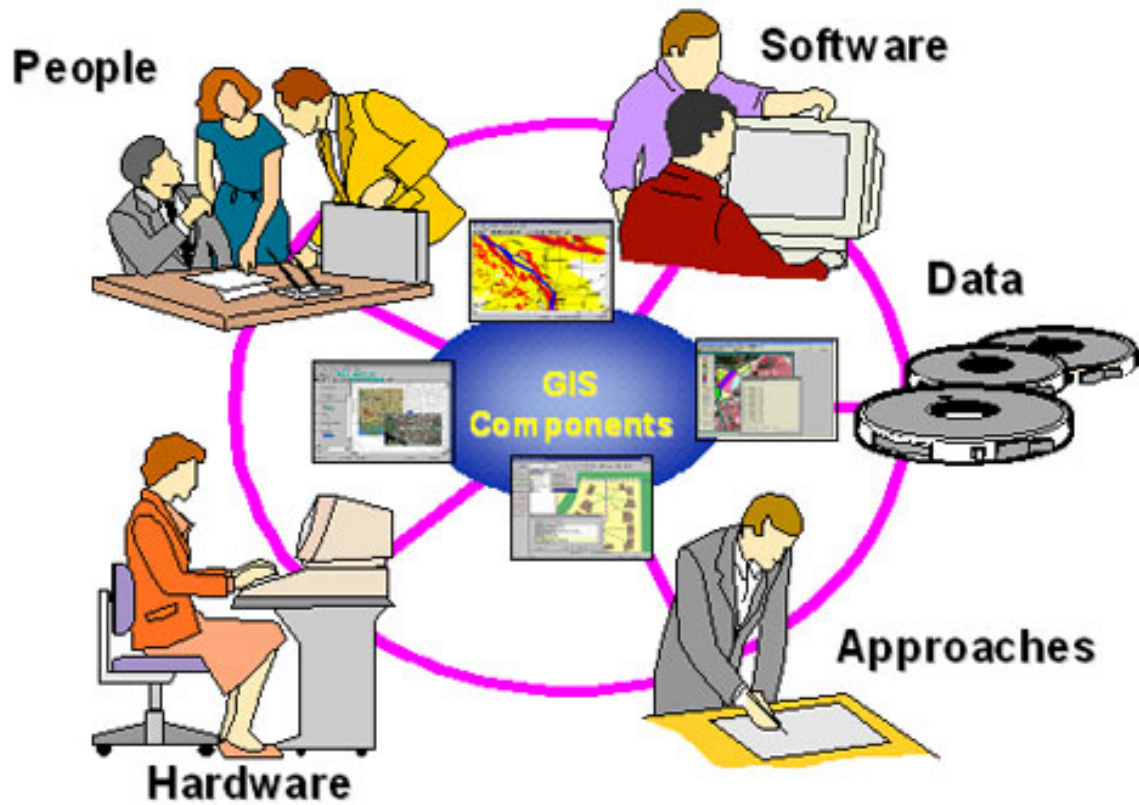
expl  ratorium / cabspotting.org

01/29/06



06:00am – 06:30am







Definitions:



Geospatial information is data referenced to a place—a set of geographic coordinates—which can often be gathered, manipulated, and displayed in real time.

-Congressional Research Service

Referring to location relative to the Earth's surface. "Geospatial" is more precise in many GI contexts than "geographic," because geospatial information is often used in ways that do not involve a graphic representation, or map, of the information.

-Open Geospatial Consortium

Geospatial Intelligence (GEOINT) is the exploitation and analysis of imagery and geospatial information to describe, assess and visually depict physical features and geographically referenced activities on the Earth.

-National Geospatial-Intelligence Agency



Geospatial Technology = Digital Mapping



LIBRARY OF
CONGRESS





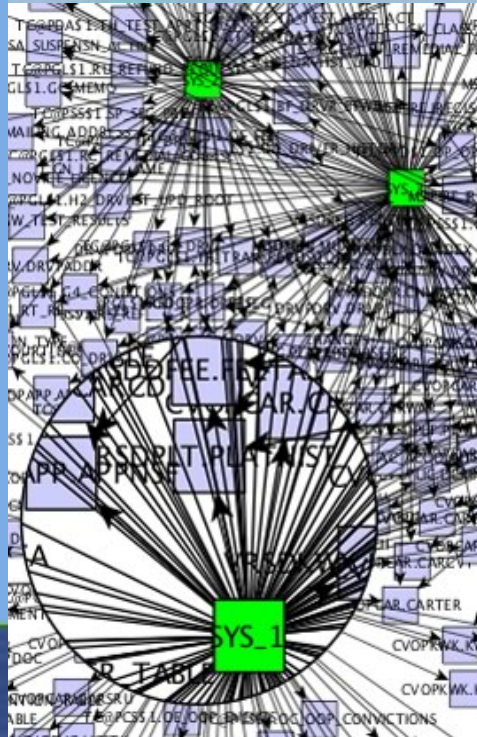
Timeline:



- Late 1960's: US Census GBF-DIME files (Geographic Base File, Dual Independent Map Encoding)
- 1968-1969: Harvard Laboratory for Computer Graphics and Spatial Analysis (ESRI founder Jack Dangermond a student)
- 1981: ESRI releases ArcView
- 1982: GRASS-GIS
- Early 1990's: GIS initiatives exist in all 50 states
- 1996: Mapquest launched on the internet
- 2004: OpenStreetMap
- 2005: Google Maps
- 2010: PleaseRobMe.com

Why So Slow to Respond?

- Scope
- Scale
- Complexity





Acceso difícil
pero no imposible





- Steve Morris, Head of Digital Library Initiatives, North Carolina State University Libraries
- John Faundeen, Archivist, US Geological Survey's Earth Resources Observation and Science Center (EROS)
- Andrew Turner, Chief Technical Officer of GeolQ