

# Maps as Narratives - Making Spatial Archives Accessible

Andrew Turner  
GeoIQ & GeoCommons

[andrew@geoiq.com](mailto:andrew@geoiq.com)  
twitter: @ajturner

© 2008 Europa Technologies  
Map data © 2008 EMapas/El Mercurio  
© 2008 Tele Atlas  
Image NASA



flickr: fred\_del

## Maps as Narrative



*Suplice parmi les Nègres.*



*Nacités des Madagascariens.*



*Sépultures des Madagascariens.*



*Exercice des Nègres, qui se courent à bras de l'arc.*



### De l'île de Madagascar.

Cette île s'étend du Nord-Nord-Est au Sud-Sud-Ouest au delà de la ligne commençant vers le 12 degré quelques minutes de la latitude Meridionale, & finissant au 26. degré ou environ. C'est une des plus grandes îles du monde: sa longueur du Midy au Septentrion est d'environ 200. lieues d'Allemagne, & sa largeur en certains endroits est d'environ 100 lieues de France. Elle comprend diverses Régions ou Provinces dont Machicore est la plus grande de toutes. La côte de l'île est divisée par des Rivières, qui prennent leur source dans le pays & qui viennent se décharger dans la Mer. La Province d'Anossi, dans laquelle est situé le Fort Dauphin, s'étend depuis le 25 degré de latitude jusqu'au 26°. La Campagne on est par tout également belle & fertile en pâturages, & le terroir excellent pour les arbres fruitiers. Elle est arrosée de la rivière de Franshere, qui a près de son embouchure une baie très commode pour les vaisseaux. Ce fut l'an 1642. que les François commencèrent à se fortifier sur la pointe la plus meridionale de cette Province, ils bâtirent sur le rivage une forteresse qu'ils nommèrent le Fort Dauphin, & y établirent une Colonie, après avoir réduit par la force des armes toute la Province sous leur domination. Ce fort est sur l'une des pointes de la Baie de Tholangare, à 25 degrés 6. min. vis à vis du Cap d'Isapere qui fait l'autre pointe. On a dressé plusieurs habitations derrière ce fort près de la maison du Gouverneur, avec un grand enclos qui produit toute sorte de fruits & d'autres végétaux. Mais la haine des habitants du pays contre les François a obligé ceux-ci à abandonner cet établissement.

### Des Peuples de l'île de Madagascar.

Il y a dans l'île de Madagascar & dans la Province d'Anossi deux sortes de peuples, des blancs & des Nègres. Les premiers, qui se sont venus habituer dans cette île depuis un peu moins de 200 ans se nomment Radimina, du nom d'Imina qui fut la mère de Mahomet, dont ils se disent les descendants. Les Nègres sont tout nus, excepté un linge dont ils couvrent leurs parties naturelles, comme on le peut voir dans les figures-ci-jointes. Les Blancs ont des habits de diverses couleurs, les uns de soye, les autres de coton, les uns rouges & les autres rayés de blanc &c. Ils en portent aussi de ce qu'on appelle l'écorce d'arbre. Chaque homme peut épouser autant de femmes qu'il en peut nourrir & l'adultère ne passe parmi eux que pour un simple larcin: aussi dit-on que les femmes de ce pays-là ont toujours, outre leur mari, deux ou trois amis qui partagent leurs faveurs, les filles en sont encore moins avares. Elles s'abandonnent à qui les veut payer, car elles ne donnent rien gratis: & si on ne les paye même sur le champ, elles se jettent sur le galant & le dépouillent. Ces peuples ne regardent pas la fornication, ni comme un péché devant Dieu ni comme un scandale devant les hommes. Une fille au contraire ne voudroit pas en se marier avec un homme, qui ne lui auroit pas donné plusieurs fois avant le Mariage des marques de sa virilité, sans doute de peur d'y être trompée & elle n'en faisoit l'essai qu'après être engagée avec lui on voit dans la Dissertacion sur cette île d'autres particularitez des mœurs de ses habitans.

*Canot des Nègres de Madagascar.*



*Peuple des Madagascariens.*



*Circuncision des Madagascariens.*



*Autre manière dont les Nègres de l'île de Madagascar se courent à bras de l'arc.*



# Maps tell Stories



People live and interact with Place





## Archival Case Study: UK Domesday Project

[http://en.wikipedia.org/wiki/  
BBC\\_Domesday\\_Project](http://en.wikipedia.org/wiki/BBC_Domesday_Project)

## Your Stories, Your History, Your Place

What do you know about where you live?

Everyone knows something about where they live, work or play.

Telling the story of your area doesn't have to be just about dates, battles or monarchs. It's everything from food and fashion, to colourful personalities and where you went to school.

This is where your journey begins.


### Explore the site

This is where your journey begins, browse the site for stories and photographs of where you live and discover what has been contributed so far.

 [Start exploring](#)

### Create a story

Your chance to write a story, add photographs, or ask questions about where you live, famous personalities, events or landmarks.

 [Create your story](#)

### Get involved

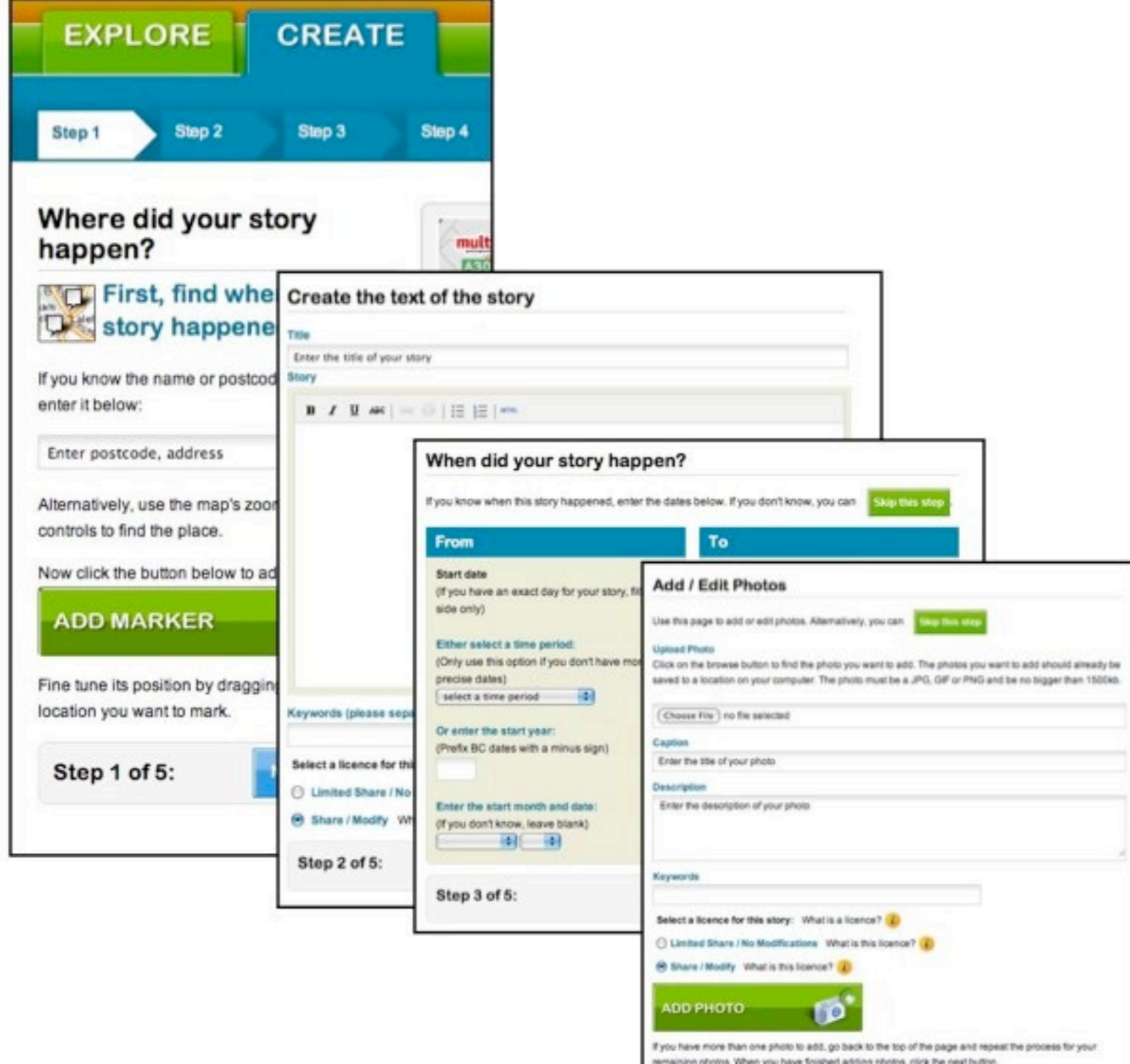
Everyone has something to contribute and by editing and adding extra information or photographs to other people's stories you are helping to build a general consensus on any particular entry.

 [Start contributing](#)

[Popular keywords](#) | [Latest keywords](#)

[What are keywords?](#) 

# EverySquareMile



User Contributions

EverySquareMile

# Latest Stories

- Bronze Age Occupation Site
- Ankerwyke and the Magna Carta
- Ancient Sword and Shield

# Popular keywords

What are keywords?

1140 AD Addlestone Air Force Almners Priory  
 American ankerwyke archery Barnes Wallis  
 Basingstoke Basingstoke Canal bombs Briand bridge  
 bronze bronze age brooklands bryson Byfleet  
 Canal car **chertsey** Chertsey Abbey  
 Chertsey Bridge chobham common church cinema  
 colebrook Commonwealth cottage cricket Crouch Oak  
**Egham** Fire Station fire-watching Fleming Football  
 frozen golf Guildford Street Henry VIII holloway Home  
**Guard** industry kennedy lagonda laleham listed Lock  
 Gates London Street longcross lumpy Lyne magna  
 carta magna carta. fish ponds memorial mosque  
 motorcycle ottershaw Paine pub qinetiq queen Queen  
 Elizabeth 1 racetrack rationing Restoration Roman  
 road Roman roads Royal Horticultural Society Royal  
 Navy runnymede Runnymede Bridge sanatorium Sayes  
 school Shah Jahan Silchester songs of praise  
 St.Peter's Staines stump sword tanks TESIS thames  
 thorne Thorne Church

Enter search term here (searches story/photo text and keywords only) Search

**Bronze Age Occupation Site** ✕

Excavations unearth evidence of Bronze Age settlers. Thorpe Lea Nurseries 'Site

1'Excavation...

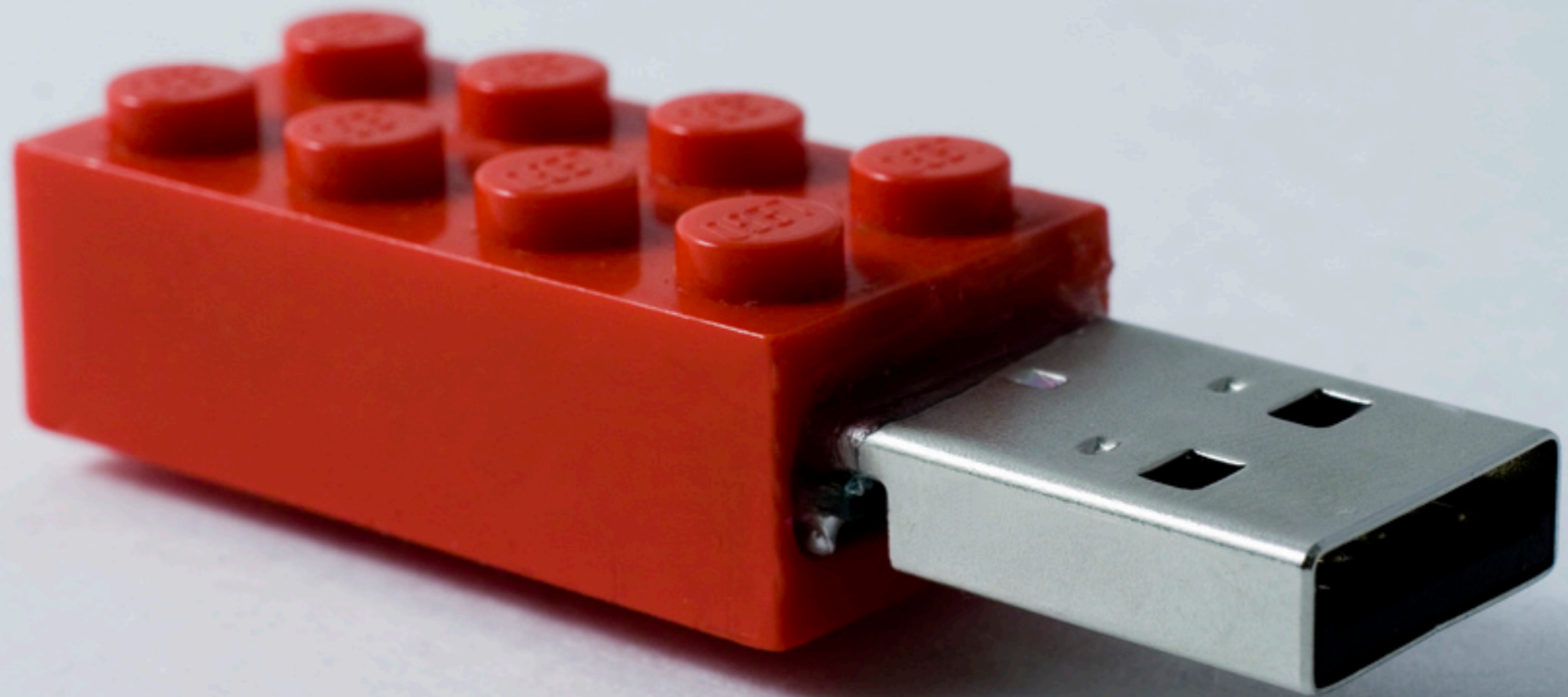
[More...](#)

Neolithic and Bronze Ages	Iron Age	Roman Britain	Vikings and Anglo-Saxons	Norman Britain	Middle Ages	Tudors	Stuarts and Civil War	Georgians (Hanover)	Victorian Britain	World Wars	Britain: 1945 onwards	All Time
---------------------------	----------	---------------	--------------------------	----------------	-------------	--------	-----------------------	---------------------	-------------------	------------	-----------------------	----------

Personal and Local  
Historical Context

EverySquareMile

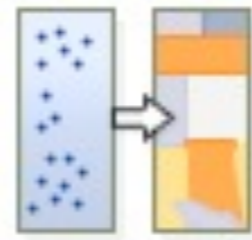
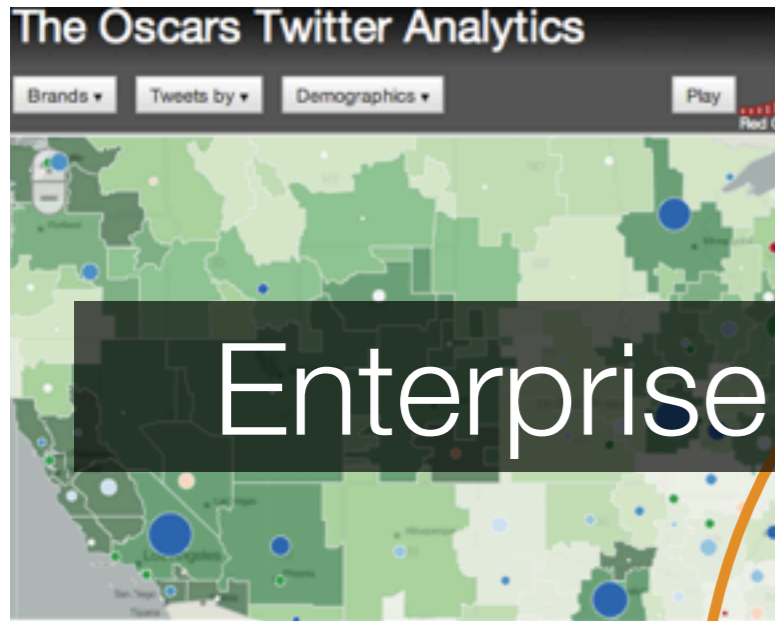




**Open**, Accessible Data  
improves Archiving



# Citizens

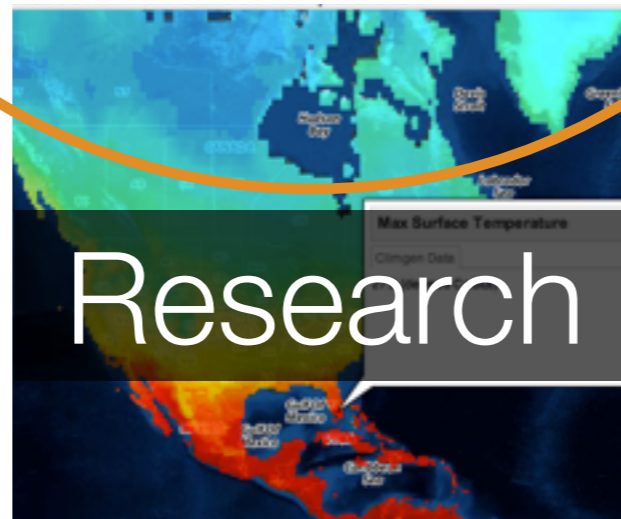
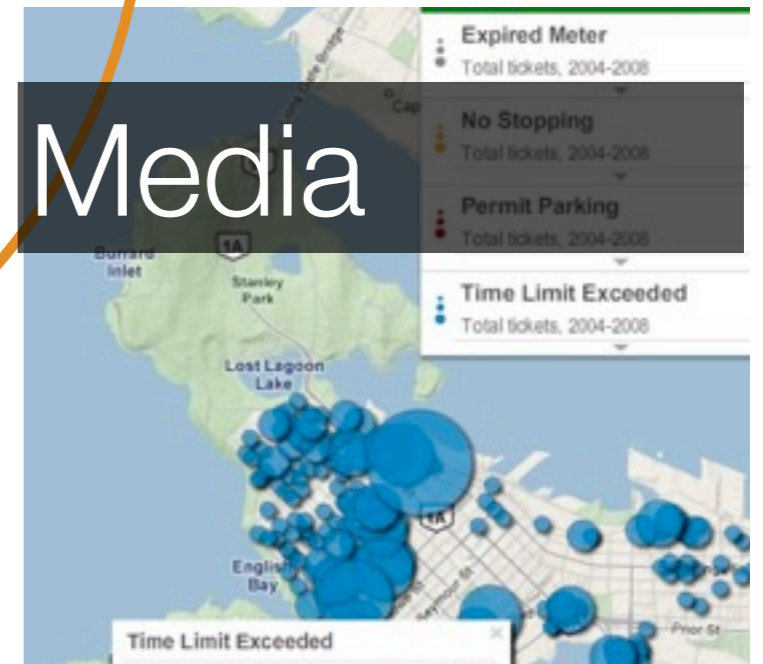
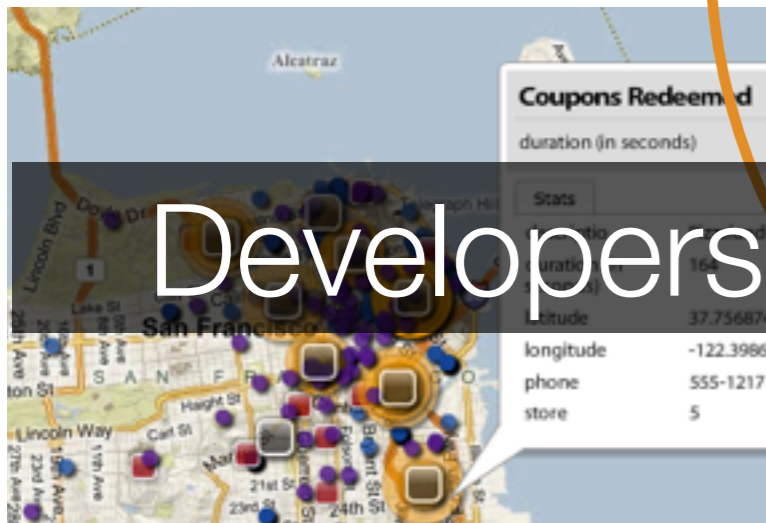


Analysis

Data



Representation



Link to this map

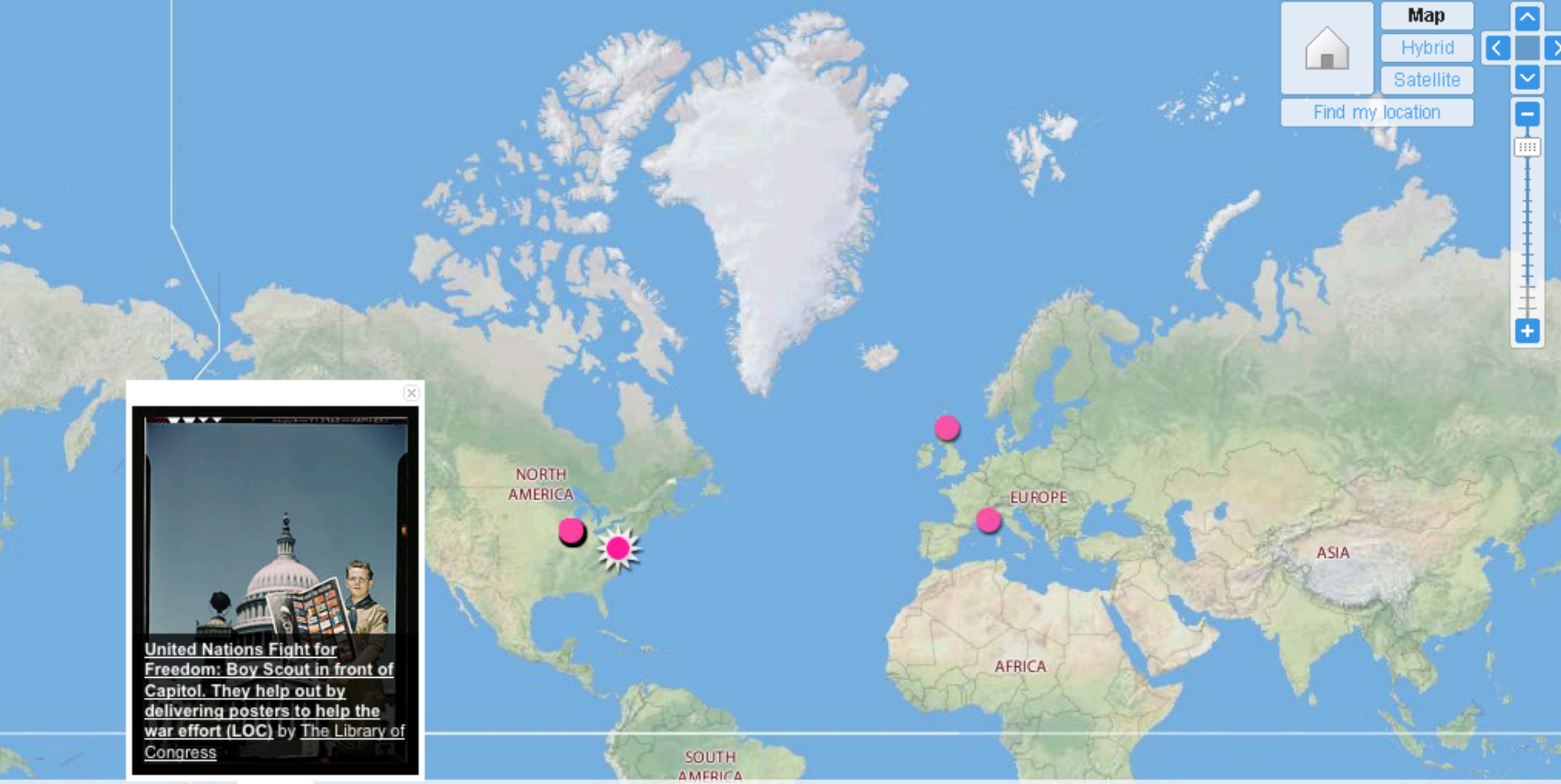
Map

Hybrid

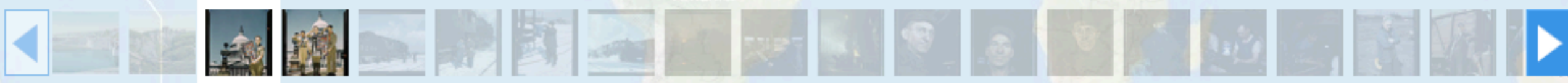
Satellite

Find my location

Map navigation controls: Home, Back, Forward, Zoom In (+), Zoom Out (-), Full Screen, Print, Location Search



United Nations Fight for Freedom: Boy Scout in front of Capitol. They help out by delivering posters to help the war effort (LOC) by The Library of Congress



[The Library of Congress' items \(66\).](#)

Sort by: [Interesting](#) • [Recent](#)

Search the map

Favorite Actions Share this

Newer Older



By Smithsonian Institution Smithsonian Institution + Add Contact

This photo was taken on December 23, 2010.

1,447 4 15 3

This photo belongs to

Smithsonian Institution's photostream (2,063)



Comments and faves

thehouyhnhm, peacefroggy, shantijasmine, and moss132000 added this photo to their favorites.



rockcreek\_pro (2 months ago)

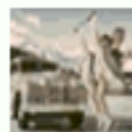
Any idea whether the USPS offered any economic incentive for individual rural carriers to do so? I'd also be interested to know what make/model of car is being used here.



Revere J\_pro (2 months ago)

It kind of looks like it might be a curved dash Olds.

bob the builder of luv and idricaponyexpress added this photo to their favorites.



proscriptus\_pro (2 months ago)

It may actually be Fred Postal's eponymous Postal: blog.hemmings.com/index.php/2010/12/31/nor-sn ow-postal-tr...

Photograph of rural carrier in automobile

Date: c. 1905

Object number: A.2010-1

Medium: paper; photo-emulsion

Dimensions (Unframed): 2 1/4" x 4 1/2"

Description: An unidentified, enterprising Rural Free Delivery (RFD) carrier tries c off for a Post Office Department photographer. The Department has...

+ 1840

+ 2010

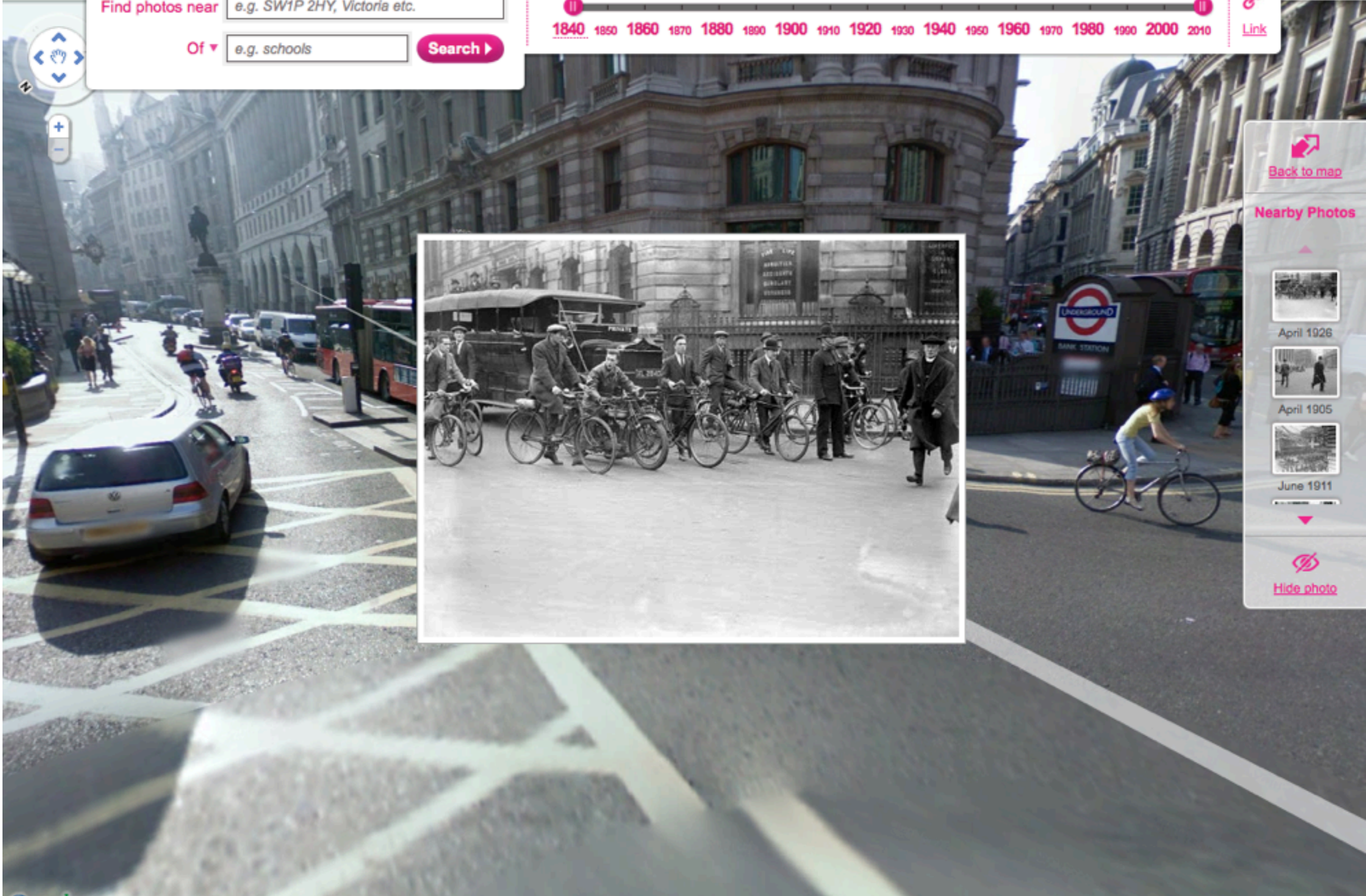
Find photos near

Of

Search

1840 1850 1860 1870 1880 1890 1900 1910 1920 1930 1940 1950 1960 1970 1980 1990 2000 2010

Link



Back to map

Nearby Photos



April 1926



April 1905



June 1911




Hide photo

# The Information Aether




Search results for...

Search:

**Dataset** **Western US Railroads** 


224 features

Shows the extent of the historic (pre-1900) rail line digitized by researchers at the Spatial History Lab, Stanford University. This...  
tagged: [america](#) [digitization](#) [history](#) [north rail](#) [railroads](#) [spatial](#) [states](#) [united west](#)  
uploaded by [spatialhistory](#) 2 months ago

**Dataset** **Western US Rail Stations** 

529 features

Shows the extent of the historic (pre-1900) rail stations digitized by researchers at the Spatial History Lab, Stanford University. This...  
tagged: [america](#) [digitization](#) [history](#) [north rail](#) [railroads](#) [spatial](#) [states](#) [united west](#)  
uploaded by [spatialhistory](#) 2 months ago

**Dataset** **Transcontinental Railroads 1893** 

1246 features

Prepared for the Shaping the West project at the Stanford Spatial History Lab by Toral Patel and Richard White. Developed...  
tagged: [america](#) [digitization](#) [history](#) [north rail](#) [railroads](#) [spatial](#) [states](#) [transcontinental](#) [united west](#) ...  
uploaded by [spatialhistory](#) 2 months ago

**Dataset** **Transcontinental Railroads 1879** 

959 features

Prepared for the Shaping the West project at the Stanford Spatial History Lab by ... Developed...

Sort By

- 
- 
- 
- 
- 

Subscribe

- 
- 

Tags (click a tag for related items)

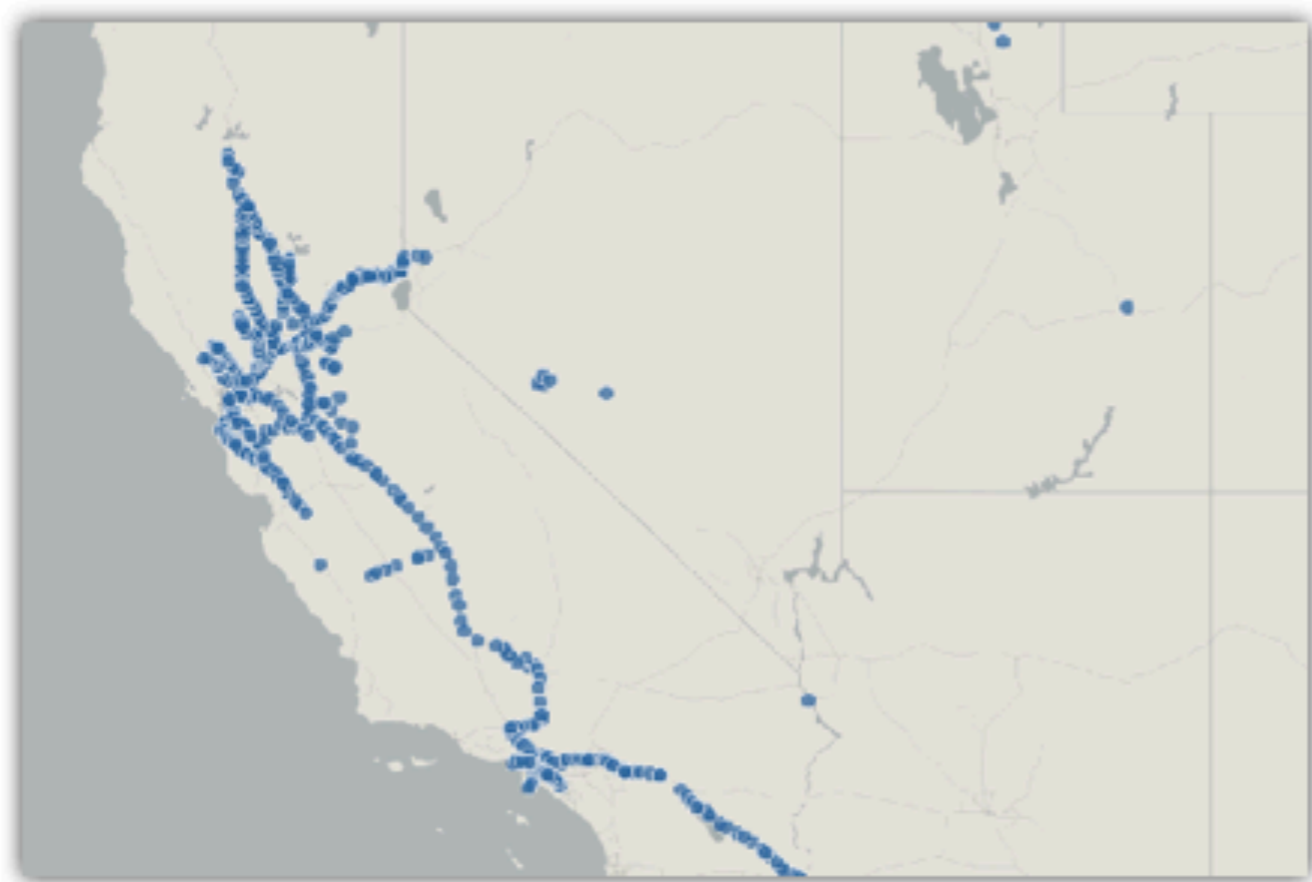
- history
- west
- rail
- spatial
- digitization
- fresno
- north
- united
- states
- america
- railroads
- transcontinental
- patents
- madera
- speculation
- county
- schools
- homestead
- offices
- historic
- 1891
- settlement
- post
- atlas

Collaborative Sharing



← spatialhistory's datasets • copy • feature

## Western US Rail Stations



Shows the extent of the historic (pre-1900) rail stations digitized by researchers at the Spatial History Lab, Stanford University. This is an ongoing project; features represented here focus primarily on California rail line, with some historic rail line also traced in Nevada and Utah. Please see the visualization "Extent of Digitized Rail" on the Spatial History Project website.

Georectified historic USGS quads provide the basis for this work. Attribute data for

**Map Data**

**Analyze Data**

**Show Data**

**KML**  
Google Earth, Microsoft Virtual Earth and others.

**Shapefile**  
ESRI, uDig and others.

**Spreadsheet**  
CSV format, Excel, OpenOffice and others.

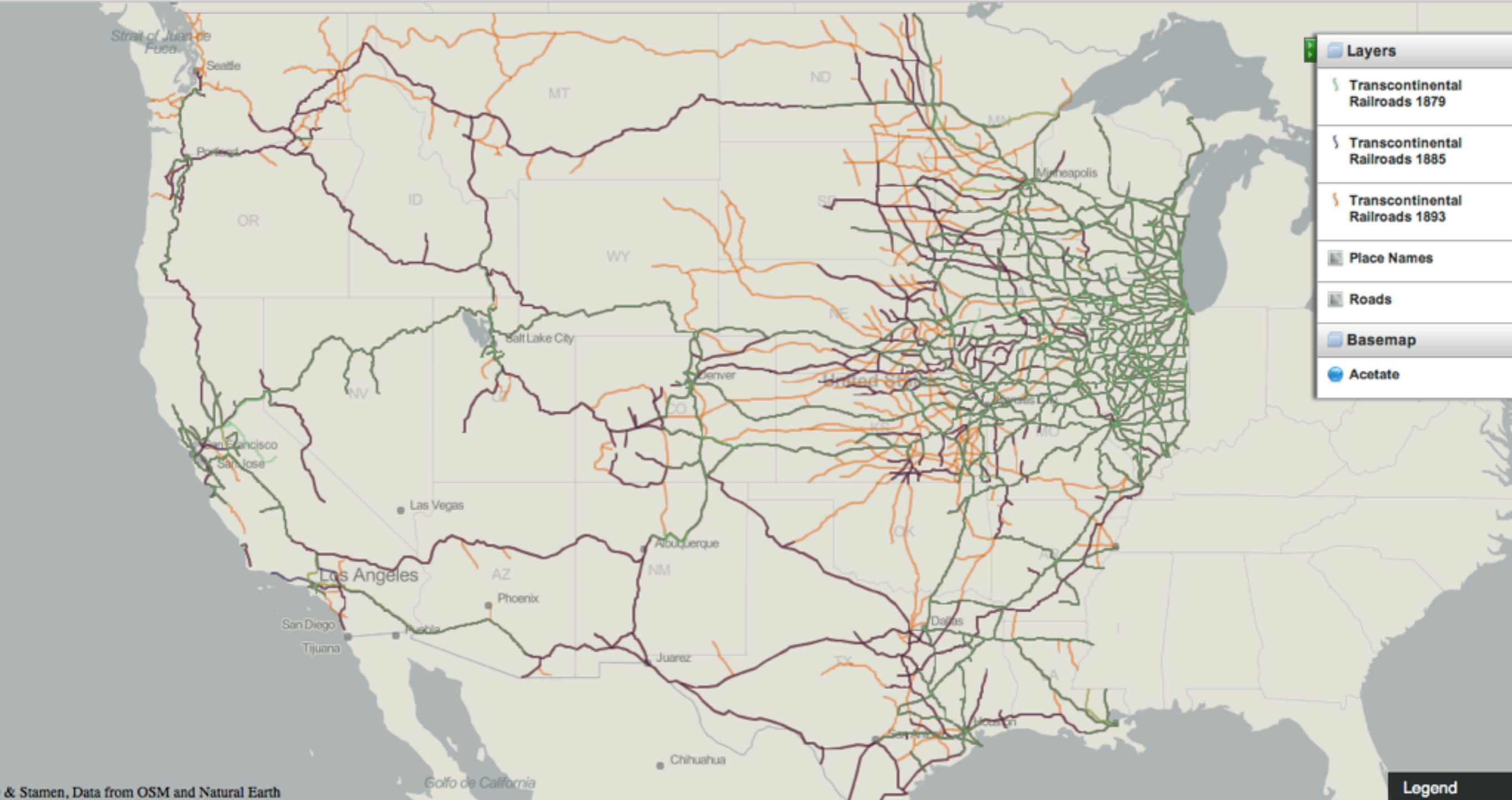
**Other formats**  
[Atom](#)  
[JSON](#)  
[Spatialite](#) BETA

**Metadata**  
[FGDC](#)  
[ISO 19115](#)

**Tags** (hint: click to search)  
[america](#) [digitization](#) [history](#) [north](#) [rail](#) [railroads](#) [spatial](#) [states](#) [united](#) [west](#)

**529** Features **7** Attributes

# Automatic Metadata

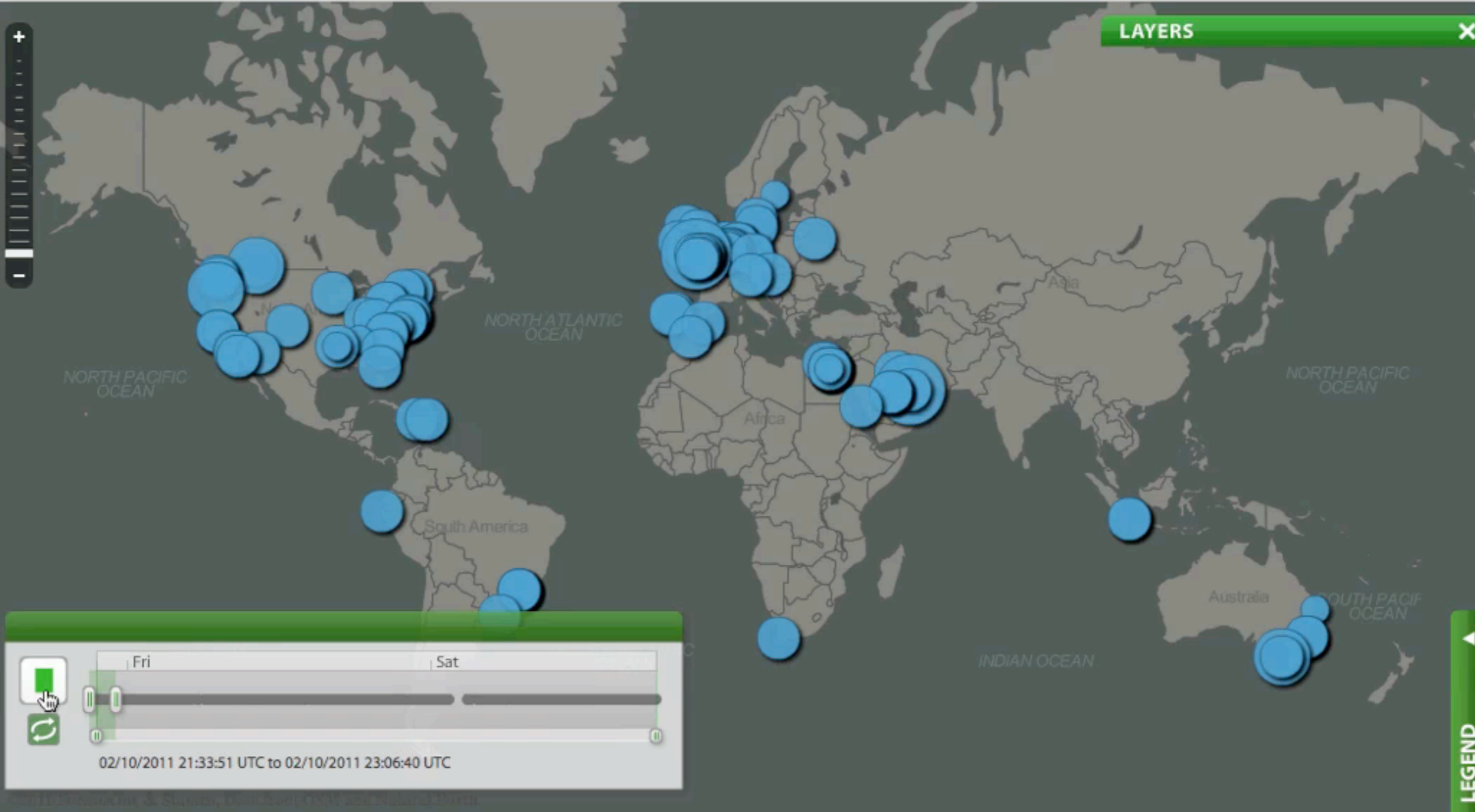


Tools to Use Data

Transcontinental Railroads

Live feed of tweets mentioning #Egpyt #Jan25 #Tahrir

Designed by: [chelm](#) | [3D mode](#) [Details](#)



# USNORTHCOM Hurricane Irene

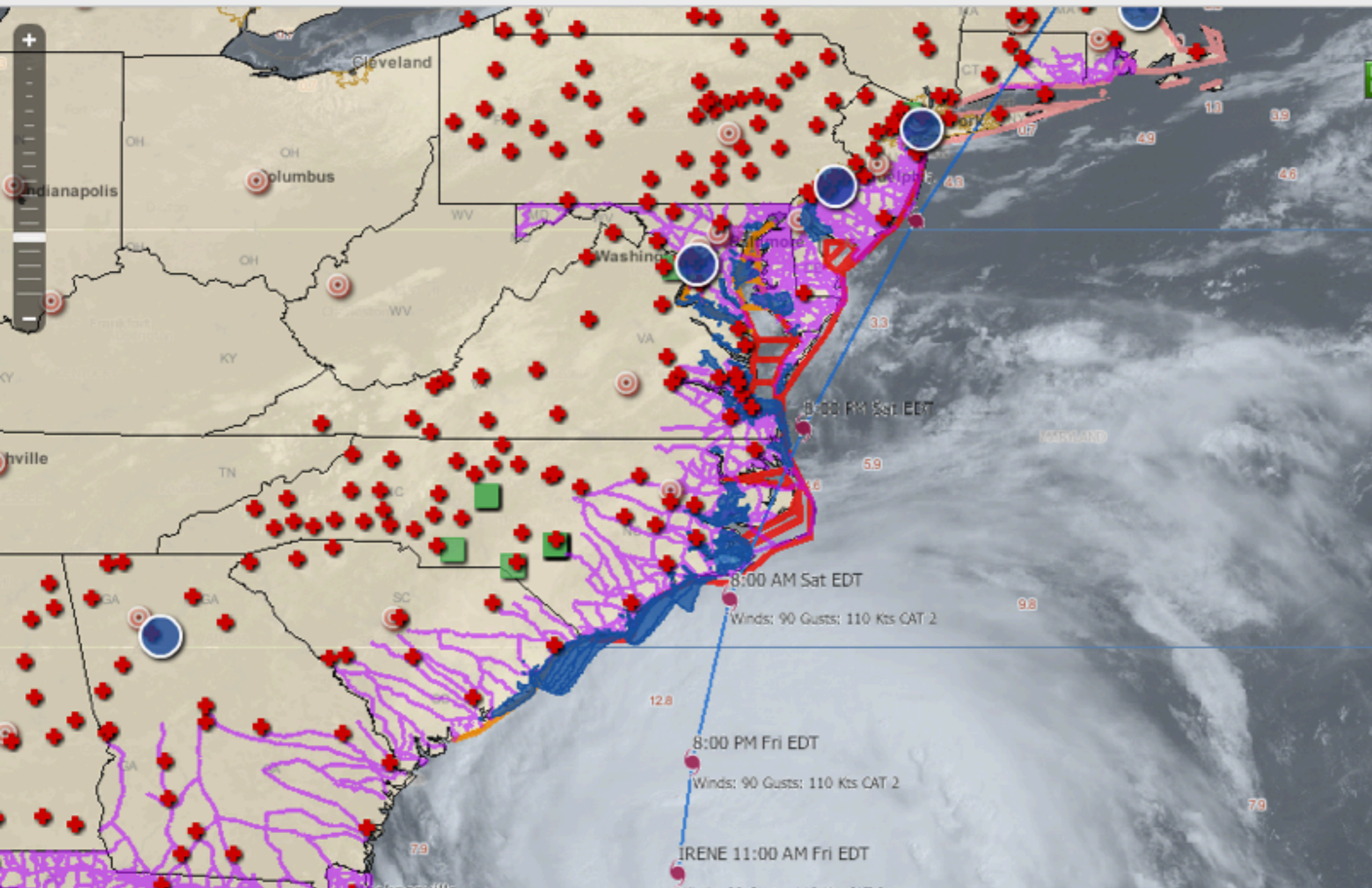


Designed by: coronad0

Share

3D

Edit



**Layers**

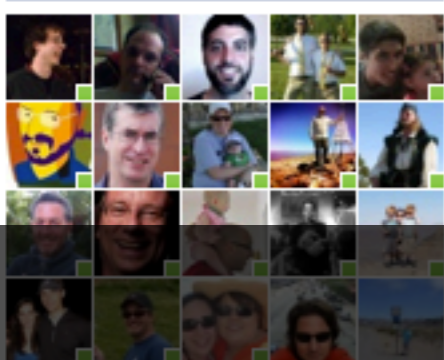
- FEMA Regional HQ
- Red Cross HQs
- Nuclear Power Plants w/ 15 mile buffer
- Storm Surge Inundation by PSurge10c
- WMD Civil Support Teams
- FEMA Evacuation Routes
- Ft. Bragg ISB Support infrastructure for the Irene ISB, Ft. Bragg
- Basemap
- VMAP GeoCache (4326)

## Hurricane Irene

 **Andrew Turner**  
[Edit My Profile](#)

- FAVORITES**
- News Feed
  - Messages 20
  - Events 2
  - Friends 39
- GROUPS**
- Refresh DC
  - DC Tech Jobs
  - NASATweetup Alumni
  - Ann Arbor Bi Bim B...
  - Data BBQ
- APPS**
- Game Requests 24
  - App Requests 45

Friends on Chat



### News Feed

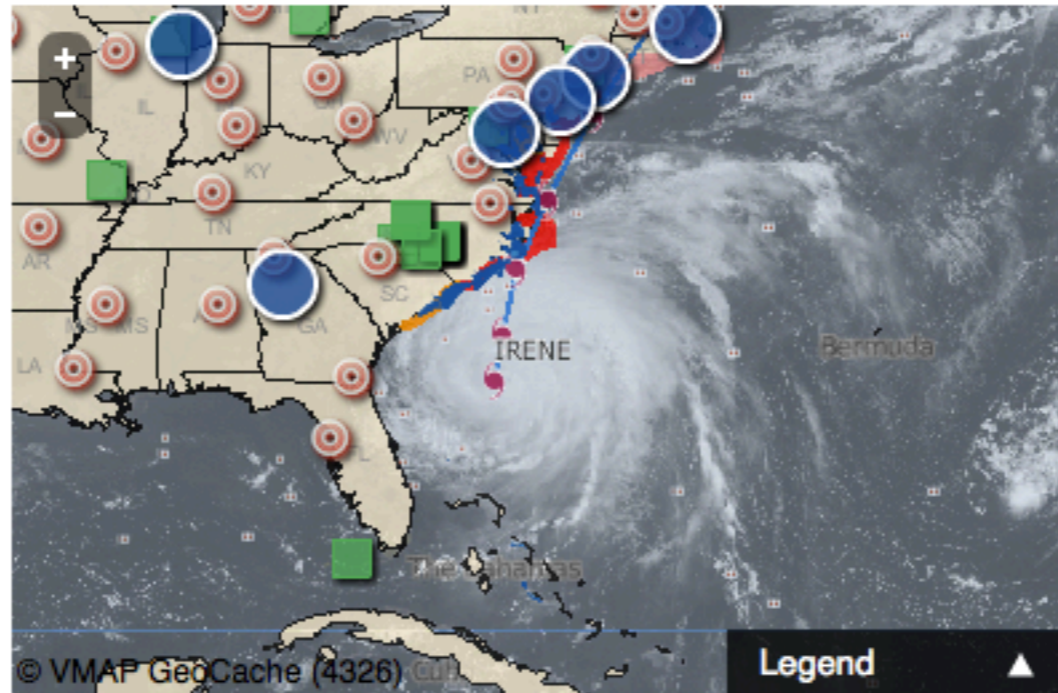
Top News · Most Recent 16

Share: Status Photo Link Video Question

What's on your mind?



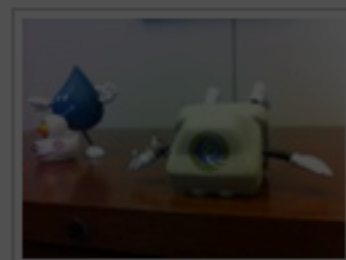
**Andrew Turner**  
<http://geocommons.com/maps/96558>



2 seconds ago · Like · Comment · Share



**Corrie Clark**  
Poor E-waste Champion! He survived the 5.9 seismic event only to be laid out by an aftershock last night.



Mobile Uploads

### Upcoming Events See All

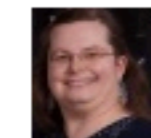
What's the event?

- 2 event invitations
- Birthdays: Annie Wolock, Kelli Gates Turner

### People You May Know See All



**Ed Turner**  
Add Friend



**Amanda H. S. Taub**  
8 mutual friends  
Add Friend

### Sponsored See All

#### Project Shiphunt



Can five students find a sunken ship with a laptop? Project Shiphunt - powered by Sony & Intel. Premieres on Current TV Aug. 30 10/9C.

Date August 30 at 10:00pm  
 Location Current TV  
 Attendees 14,514 people  
 RSVP  Yes  Maybe  No

### Pokes

# Maps as Social Objects

Chat (18)

# Thank You

---

email: [andrew@geoiq.com](mailto:andrew@geoiq.com)

blog: [highearthorbit.com](http://highearthorbit.com)

twitter: [@ajturner](https://twitter.com/ajturner)

