

Making Connections: Museum CMS and Archives at The Henry Ford

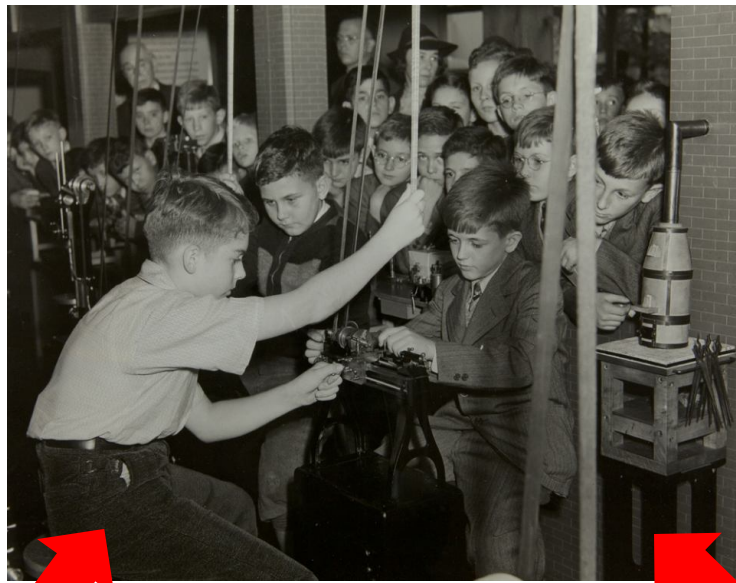
Brian Wilson
SAA Annual Meeting
Session 109
New Orleans, LA
15 Aug 2013

Take it Forward.™

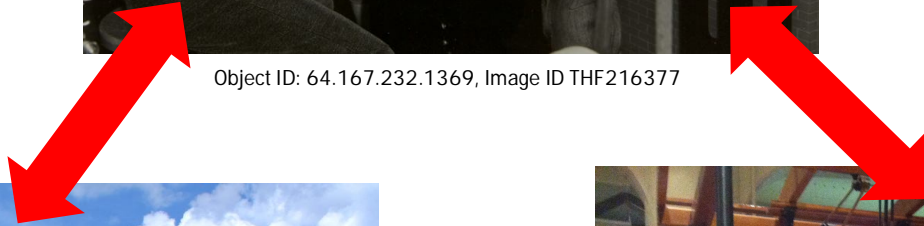
the
**Henry
Ford**®



Image: Henry Ford Trade School Football Team, 1925; Object ID: P.833.44476; Image ID: THF229865



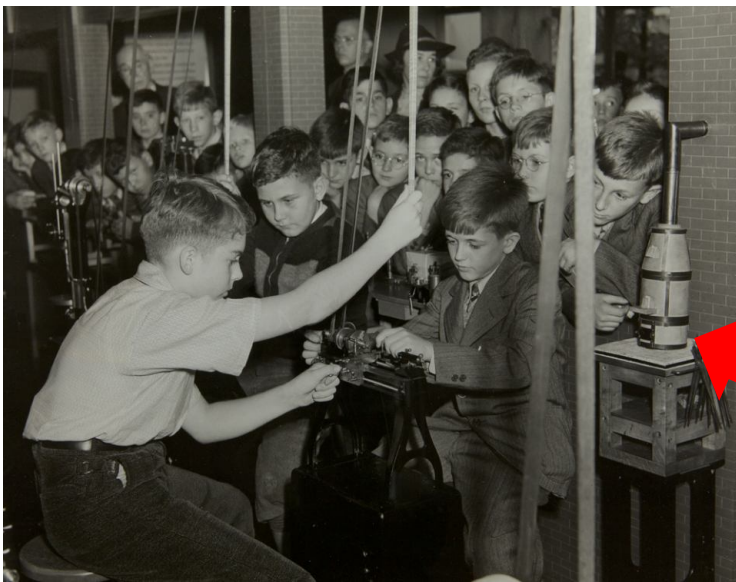
Object ID: 64.167.232.1369, Image ID THF216377



Menlo Park Machine Shop; Object ID 29.3048.3, Image ID THF1975



Model Machine Shop, Boiler, and Steam Engine Exhibit, Henry Ford Museum



Object ID: 64.167.232.1369, Image ID THF216377



Object ID: P.188.24712, Image ID P.188.24712

NEW YORK WORLD'S FAIRS
New York World's Fair, 1939-1940

Box 11

Indexes

Photograph caption list (contains listing of photograph captions by photograph number covering photographs numbered 1-1486 and 2000-3463) (1 binder)

Photograph caption list (contains listing of photograph captions by photograph number covering listing covers photographs numbered 1-1465 and 2000-2742; also includes lists of New York area photography contacts and list of Ford Photographic staff) (1 binder)

Photo order list (list of photograph orders including information for order number, date, negative number, and description and instruction)

Box 12

Photographs by topic

American families (2 folders)

Ballet

Car design

Celebrities

Box 13

Dealers

General

Merit salesmen

Edison Institute

Employees

Entrance hall

Box 14

Ford Day (4 folders)

Ford Exposition (2 folders)

Box 15

Fur fashion

Garden Court

Good drivers (3 folders)

Box 16

Guests

General

Entertained (3 folders)

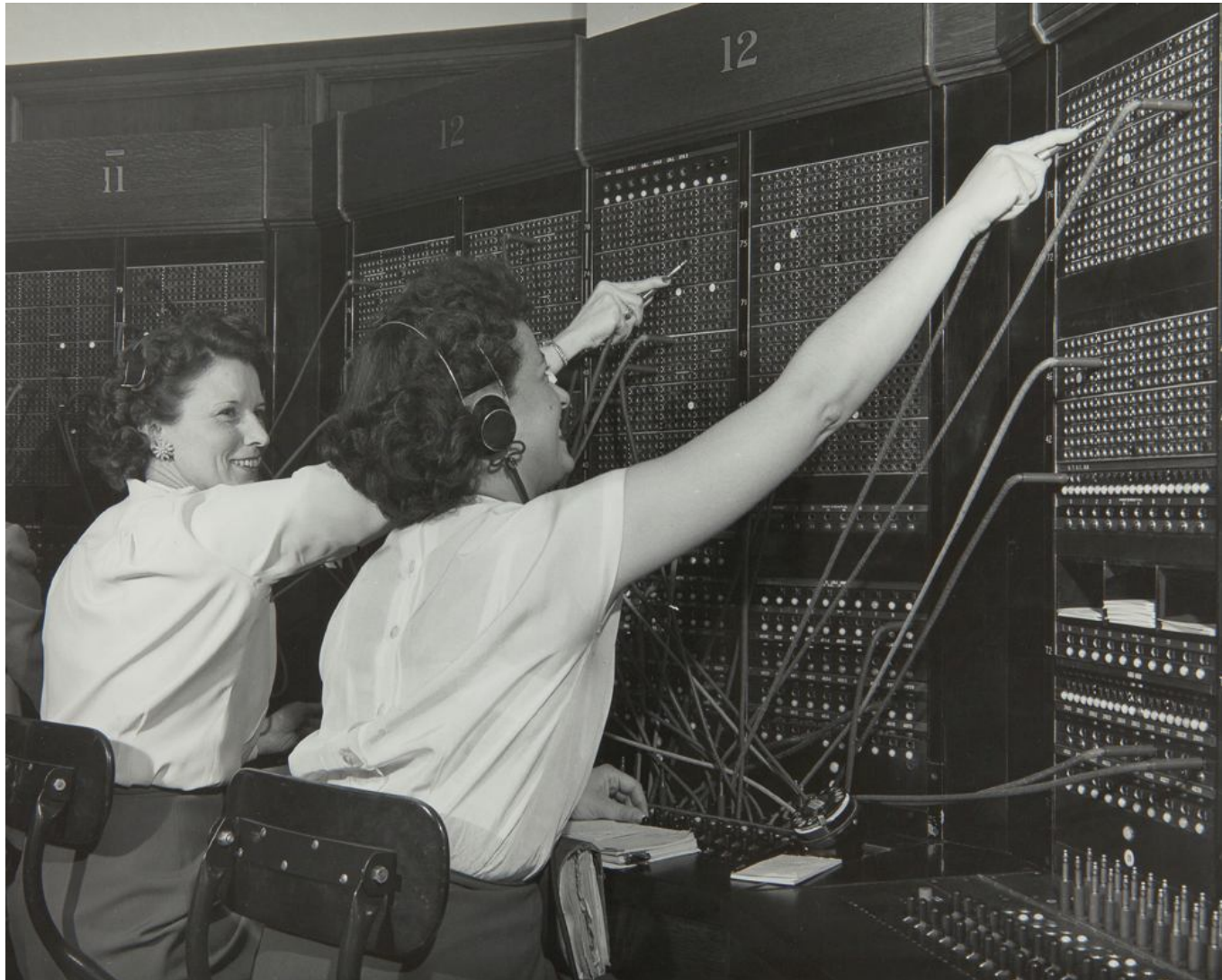


Image: Telephone Operators, Ford Rouge Administration Building, 1947; Object ID: P.833.84658; Image ID: THF229881

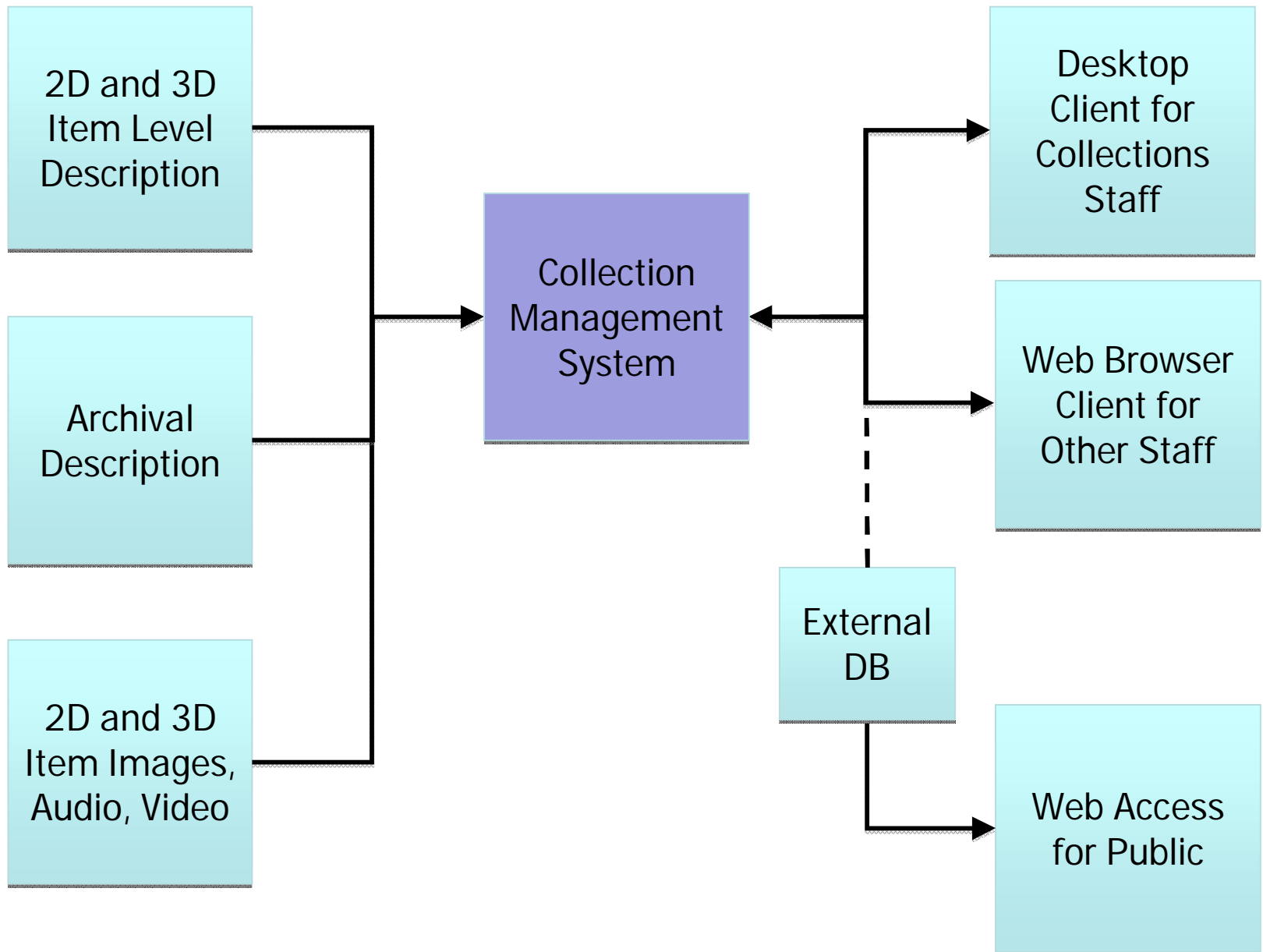




Image: emu, by Malvivate; http://www.flickr.com/photos/bastian_bodyl/5707047637/

Keys to System Selection

- Mainstream museum application
- Broad museum user base
- Web publishing capabilities
- Ease of adding multimedia
- Loan and Event modules
- User control of sort and lookup lists
- Archives management features



Archives Adoption Issues

Pros

- Institutional mandate
- Enterprise wide
- Common functions
- Digitization project
- No prior AMS history

Cons

- Institutional mandate
- Proprietary
- Expensive
- Complex
- Non-archival origins
- Small archives user base

Archives Data Issues

- Data for collections in many places
 - Paper and electronic accession records
 - MARC database
 - Stacks location database
 - Paper and electronic description
 - Collection survey and inventory
- Messy
- *We want and need a single database.*

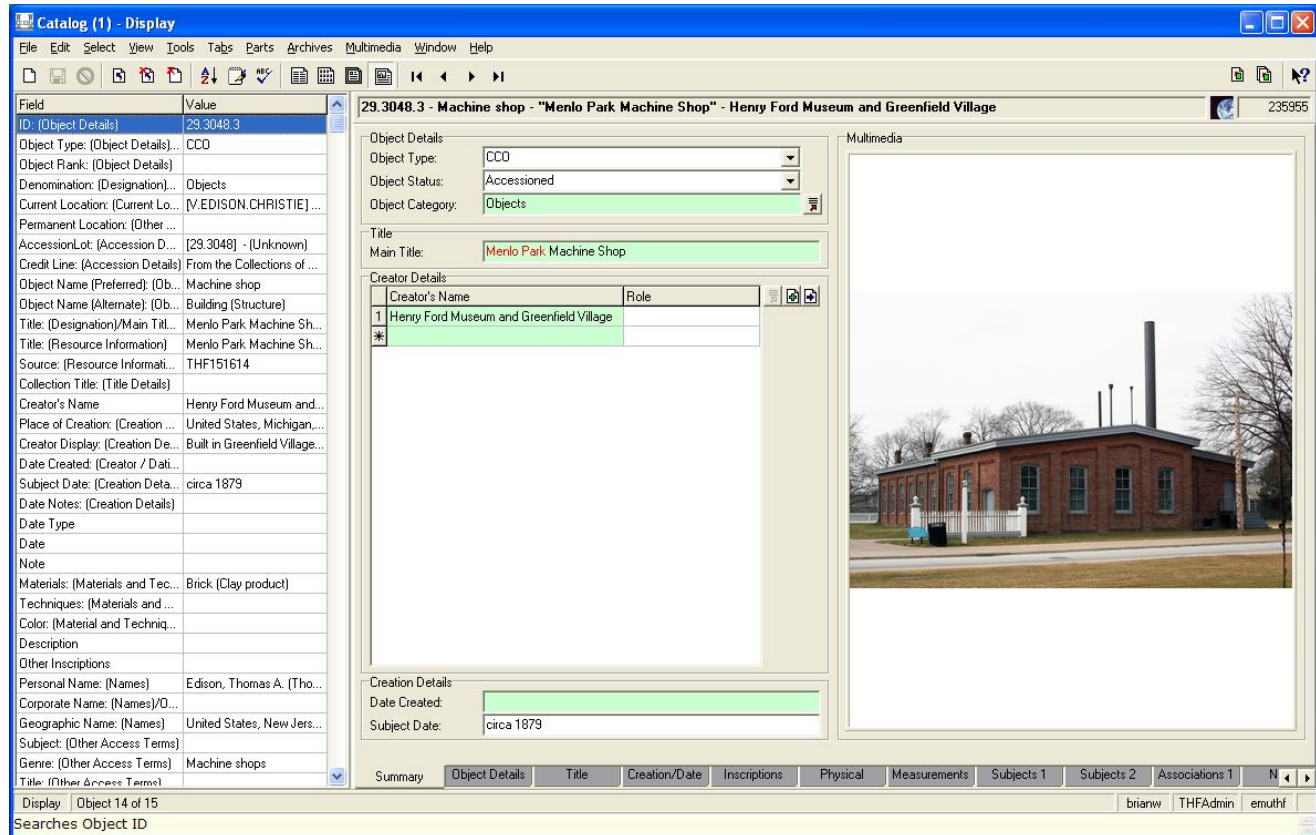
Decisions

- Fields shared with item cataloging
 - Descriptive
 - Title, subject date, subjects, accession lot
 - Administrative
 - Object status, record status, record publishing
- New fields required
 - Bulk date, container
- Define item types for collection and component
- Physical location record scheme
- Hold off optimizing interface for workflow

EMu Basics

- Modular System
 - Catalog, Multimedia, Accession Lot, Location, Event
- Oriented towards singular physical items
 - Locomotive, chair, photograph
- Basic set of fields for all object records
 - Archives is an extension of the Catalog module
- Items are described within object records
- Relations can connect object records

Client Interface



Cataloging Collections: Approach One

- Treat collections as singular objects
- Each receives single object record
 - Otherwise same as MARC
- Can go further by attaching description
 - Inventory or full finding aid
 - Text in PDF or other format
 - Structured data in XML


Collection-Level Record

Catalog (2) - Display

File Edit Select View Tools Tabs Parts Archives Multimedia Window Help

Field	Value
ID: (Object Details)	64.167.232.0
Object Type: (Object Details)/Object Typ...	Archival - Collection
Object Rank: (Object Details)	
Denomination: (Designation)/Object Cate...	
Current Location: (Current Location)	
Permanent Location: (Other Locations)	
AccessionLot: (Accession Details)/Acces...	[64.167.232] - (Gift)
Credit Line: (Accession Details)	From the Collections of The Henry Ford. Gift of...
Object Name (Preferred): (Object Details)	Archives (Groupings)
Object Name (Alternate): (Object Details)	
Title: (Designation)/Main Title: (Title)/Mai...	World's Fair Photographs series, 1933-1964
Title: (Resource Information)	Finding aid for the World's Fair Photographs se...
Source: (Resource Information)	
Collection Title: (Title Details)	World's Fair Photographs series, 1933-1964
Creator's Name	
Place of Creation: (Creation Details)	
Creator Display: (Creation Details)	
Date Created: (Creator / Dating)/Date Cr...	
Subject Date: (Creation Details)	1933-1964
Date Notes: (Creation Details)	
Date Type	
Date	
Note	
Materials: (Materials and Techniques)/Ma...	
Techniques: (Materials and Techniques)/...	
Color: (Material and Technique)	

378545
64.167.232.0 - Archives (Groupings) - "World's Fair Photographs series, 1933-1964"



<p>Object Details</p> <p>Object Type: Archival - Collection</p> <p>EAD Level/Component</p> <p>EAD Identifier: 64.167.232.0</p> <p>Unit ID: 64.167.232.0</p> <p>Level Attribute: Collection</p> <p>Component Level:</p>	<p>File Description</p> <p>Title Proper: World's Fair Photographs Ser</p> <p>Sub-title:</p> <p>Sponsor:</p> <p>Edition Statement:</p> <p>Publication Statement: Benson Ford Research Cent</p> <p>Note Statement:</p>
<p>Profile Description</p> <p>Creation: Finding Aid encoded by Brian Wil</p> <p>Language of Finding Aid: English</p> <p>Author of Finding Aid:</p> <p>Language Code: eng</p> <p>Descriptive Rules:</p>	<p>Revision Description</p> <p>Revision Date:</p> <p>Revision:</p> <p>Revision By:</p>

References Deaccession Parts Archives EAD Header Component Description Access

Display Object 1 of 1 brianw THFAdmin emuthi

Contains the name of the person responsible for the creation of the collection item.

Cataloging Collections: Approach Two

- Collection level treated as singular object
- Add components as singular objects
 - Series, subseries, files
- And, collection items as singular objects
 - Photograph, letter, brochure
- Link singular objects using relations
- Related objects form collection hierarchy

Collection-Level Record

Catalog (2) - Display

File Edit Select View Tools Tabs Parts Archives Multimedia Window Help

Field	Value
ID: (Object Details)	64.167.232.0
Object Type: (Object Details)/Object Typ...	Archival - Collection
Object Rank: (Object Details)	
Denomination: (Designation)/Object Cate...	
Current Location: (Current Location)	
Permanent Location: (Other Locations)	
AccessionLot: (Accession Details)/Acces...	[64.167.232] - (Gift)
Credit Line: (Accession Details)	From the Collections of The Henry Ford. Gift of...
Object Name (Preferred): (Object Details)	Archives (Groupings)
Object Name (Alternate): (Object Details)	
Title: (Designation)/Main Title: (Title)/Mai...	World's Fair Photographs series, 1933-1964
Title: (Resource Information)	Finding aid for the World's Fair Photographs se...
Source: (Resource Information)	
Collection Title: (Title Details)	World's Fair Photographs series, 1933-1964
Creator's Name	
Place of Creation: (Creation Details)	
Creator Display: (Creation Details)	
Date Created: (Creator / Dating)/Date Cr...	
Subject Date: (Creation Details)	1933-1964
Date Notes: (Creation Details)	
Date Type	
Date	
Note	
Materials: (Materials and Techniques)/Ma...	
Techniques: (Materials and Techniques)/...	
Color: (Material and Technique)	

378545
64.167.232.0 - Archives (Groupings) - "World's Fair Photographs series, 1933-1964"

PDF

Object Details

Object Type: Archival - Collection

EAD Level/Component

EAD Identifier: 64.167.232.0

Unit ID: 64.167.232.0

Level Attribute: Collection

Component Level:

Profile Description

Creation: Finding Aid encoded by Brian Wil

Language of Finding Aid: English

Author of Finding Aid:

Language Code: eng

Descriptive Rules:

File Description

Title Proper: World's Fair Photographs Ser

Sub-title:

Sponsor:

Edition Statement:

Publication Statement: Benson Ford Research Cent

Note Statement:

Revision Description

Revision Date:

Revision:

Revision By:

References Deaccession Parts Archives EAD Header Component Description Access

Display Object 1 of 1

brianw THFAdmin emuthi

Contains the name of the person responsible for the creation of the collection item.

Components

Series

64.167.232.0-1 - "Century of Progress International Exposition, Chicago, Illinois, 1933-1934" 37854

Unit Details		Physical Details	
Repository:		Physical Descript.:	*
EAD Identifier:	64.167.232.0	Extent:	*
Unit ID:	64.167.232.0-1	Dimensions:	
Level Attribute:	Series	Genre/Form:	*
Component Level:	c01	Physical Facet:	
Unit Title:	Century of Progress International Exposition, Chicag	Material Details	
Unit Date:	1933-1934	Material Specific:	
Earliest:	1933	Abstract:	
Latest:	1934	Language of Material	Language Code
Origination:	*		
Previous ID:	*		
Container:			

Sub-series

64.167.232.0-2 - "Numbered photographs" 37854

Unit Details		Physical Details	
Repository:		Physical Descript.:	*
EAD Identifier:	64.167.232.0	Extent:	*
Unit ID:	64.167.232.0-1-1	Dimensions:	
Level Attribute:	File	Genre/Form:	*
Component Level:	c02	Physical Facet:	
Unit Title:	Numbered photographs	Material Details	
Unit Date:		Material Specific:	
Earliest:		Abstract:	
Latest:		Language of Material	Language Code
Origination:	*		
Previous ID:	*		
Container:			

File


64.167.232.0-3 - "1-15, 1933-1934" 378548

Unit Details		Physical Details	
Repository:		Physical Descript.:	*
EAD Identifier:	64.167.232.0	Extent:	*
Unit ID:	64.167.232.0-1-1	Dimensions:	
Level Attribute:	File	Genre/Form:	*
Component Level:	c03	Physical Facet:	
Unit Title:	1-15	Material Details	
Unit Date:	1933-1934	Material Specific:	
Earliest:	1933	Abstract:	
Latest:	1934	Language of Material	Language Code
Origination:	*		
Previous ID:	*		
Container:	Box 1, Folder 1		

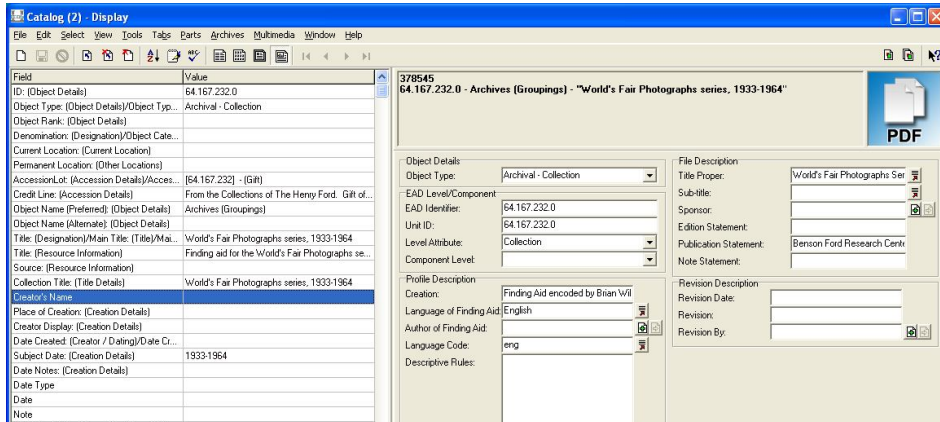
Item

64.167.232.405 - Photographic print - "Court of the World's Revolving Globe, Ford Exhibition Building, Century of Progress International" 370320

Object Details		Multimedia
Object Type:	CCO	
Object Status:	Accessioned	
Object Category:	Photographs	
Title		
Main Title:	Court of the World's Revolving Globe, Ford Exhibition Building, C	
Creator Details		
Creator's Name	Role	
1 Ford Motor Company, Photographic Depart...		
Creation Details		
Date Created:		
Subject Date:	1934	

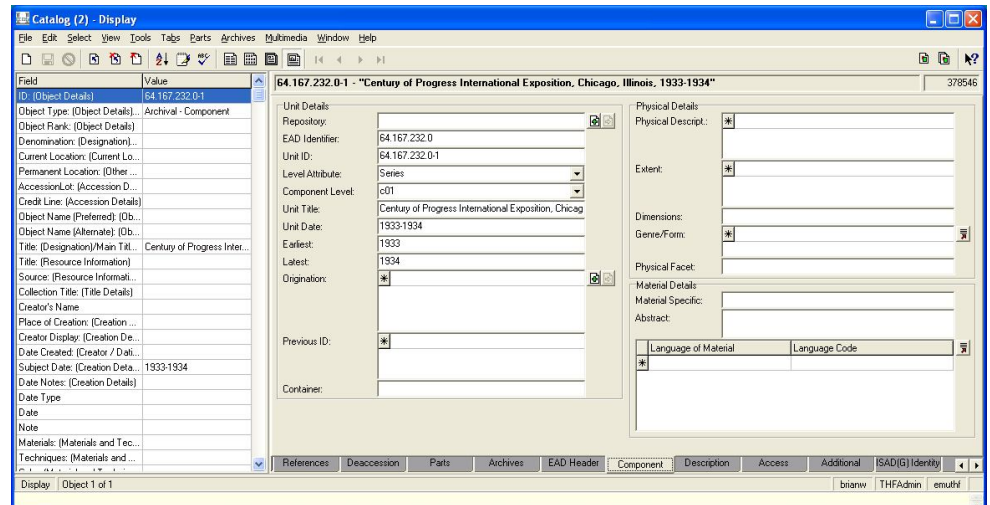


Relating Components



Collection (parent)

Link child to parent



Series (child)

Hierarchy

Catalog (1) - Display

File Edit Select View Tools Tabs Parts Archives Multimedia Window Help

Field	Value
ID: (Object Details)	64.167.232.0
Object Type: (Object Details)...	Archival - Collection
Object Rank: (Object Details)	
Denomination: (Designation)...	
Current Location: (Current Lo...	
Permanent Location: (Other ...	
AccessionLot: (Accession D...	[64.167.232] - (Gift)
Credit Line: (Accession Details)	From the Collections of ...
Object Name (Preferred): (Ob...	Archives (Groupings)
Object Name (Alternate): (Ob...	
Title: (Designation)/Main Titl...	World's Fair Photograph...
Title: (Resource Information)	Finding aid for the World...
Source: (Resource Informati...	
Collection Title: (Title Details)	World's Fair Photograph...
Creator's Name	
Place of Creation: (Creation ...	
Creator Display: (Creation De...	
Date Created: (Creator / Dati...	
Subject Date: (Creation Deta...	1933-1964
Date Notes: (Creation Details)	
Date Type	
Date	

64.167.232.0 - Archives (Groupings) - "World's Fair Photographs series, 1933-1964" 378545

Archives

- "World's Fair Photographs series, 1933-1964" [Collection - 64.167.232.0]
 - "New York World's Fairs" [Series - 64.167.232.0-90]
 - "California Pacific International Exposition, San Diego, California, 1935" [Series - 64.167.232.0-26]
 - "Dallas Centennial Central Exposition, Dallas, Texas, 1936-1937" [Series - 64.167.232.0-43]
 - "Century of Progress International Exposition, Chicago, Illinois, 1933-1934" [Series - 64.167.232.0-1]
 - "Numbered photographs" [File - 64.167.232.0-2]
 - "150-185, 1933-1934" [File - 64.167.232.0-10]
 - "250-263, 1933-1934" [File - 64.167.232.0-15]
 - "264-285, 1933-1934" [File - 64.167.232.0-16]
 - "200-216, 1933-1934" [File - 64.167.232.0-12]
 - "114-150, 1933-1934" [File - 64.167.232.0-9]
 - "16-31, 1933-1934" [File - 64.167.232.0-4]
 - "32-41H, 1933-1934" [File - 64.167.232.0-5]
 - "41J-58A, 1933-1934" [File - 64.167.232.0-6]
 - "58B-76, 1933-1934" [File - 64.167.232.0-7]
 - "77-113, 1933-1934" [File - 64.167.232.0-8]
 - "1-15, 1933-1934" [File - 64.167.232.0-3]
 - 64.167.232.405 - Photographic print - "Court of the World's Revolving Globe, Ford Exhibition Building, Century of Progress International Expo
 - 64.167.232.406 - Photographic print - "Court of the World, Rotunda of Ford Exhibition Building, Century of Progress International Exposition, C
 - 64.167.232.403 - Photographic print - "Kelsey-Hayes Company Wheel Exhibit, Ford Exhibition Building, Century of Progress International Expo
 - 64.167.232.420 - Photographic print - "Visitors inside Rotunda, Ford Exhibition Building, Century of Progress International Exposition, Chicago,
 - 64.167.232.418 - Photographic print - "Interior of Ford Industrialized Barn, Century of Progress International Exposition, Chicago, Illinois, 1934"
 - 64.167.232.407 - Photographic print - "Court of the World, Rotunda of Ford Exhibition Building, Century of Progress International Exposition, C

Relating 2D to 3D

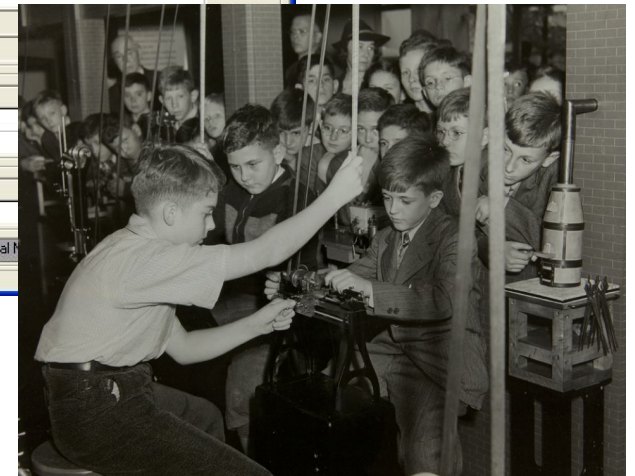


Image ID THF154890



Reference 2D record in 3D record

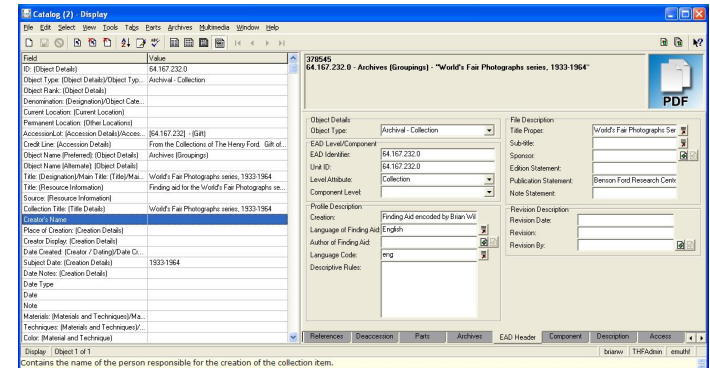
Relationship	Object	Notes
1	64.167.232.1369 - Photographic print - "Girard Colle...	Photograph shows miniature lathe in use at World's Fair exhibit.



Object ID: 64.167.232.1369, Image ID THF216377

Record Creation Methods

- Manual data entry
- Template and Ditto functions
- CSV import
 - Create from Excel or similar
- XML import
 - XSLT provides mapping
 - MARC
 - EAD



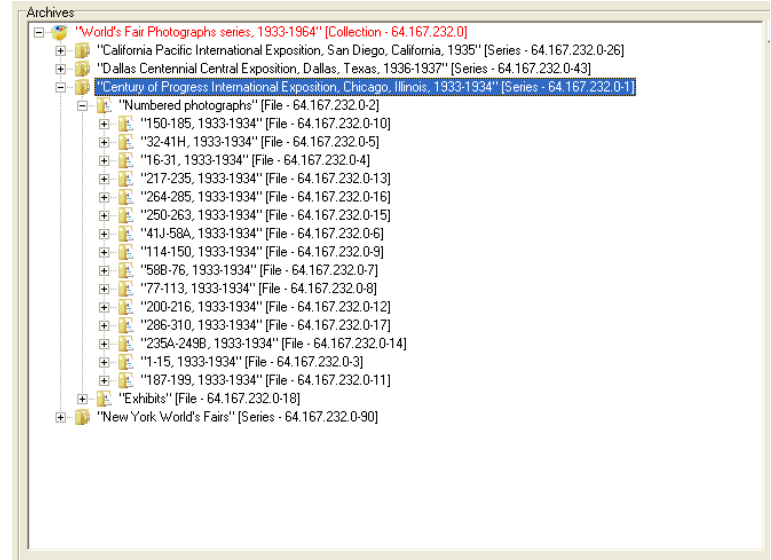
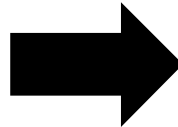
NEW YORK WORLD'S FAIRS New York World's Fair, 1939-1940	
Box 11	Indexes Photograph caption list (contains listing of photograph captions by photograph number covering photographs numbered 1-1486 and 2000-3463) (1 binder) Photograph caption list (contains listing of photograph captions by photograph number covering listing covers photographs numbered 1-1465 and 2000-2742; also includes lists of New York area photography contacts and list of Ford Photographic staff) (1 binder) Photo order list (list of photograph orders including information for order number, date, negative number, and description and instruction)
Box 12	Photographs by topic American families (2 folders) Ballet Car design Celebrities
Box 13	Dealers General Merit salesmen Edison Institute Employees Entrance hall
Box 14	Ford Day (4 folders) Ford Exposition (2 folders)
Box 15	Fur fashion Garden Court Good drivers (3 folders)
Box 16	Guests General Entertained (3 folders)

EAD Import Example

- World's Fair Photographs series
 - 2100 lines of xml
 - 203 linked records

```
193 <head>
194 </head>
195 <Container List
196 </Container List>
197 <!--series-->
198 <!--series-->
199 <!--series-->
200 <!--series-->
201 <!--series-->
202 <!--series-->
203 <!--series-->
204 <!--series-->
205 <!--series-->
206 <!--series-->
207 <!--series-->
208 <!--series-->
209 <!--series-->
210 <!--series-->
211 <!--series-->
212 <!--series-->
213 <!--series-->
214 <!--series-->
215 <!--series-->
216 <!--series-->
217 <!--series-->
218 <!--series-->
219 <!--series-->
220 <!--series-->
221 <!--series-->
222 <!--series-->
223 <!--series-->
224 <!--series-->
225 <!--series-->
226 <!--series-->
```

EAD segment



CMS Record Tree

System Development Issues

- Use of markup in text fields
 - `<list>` for example
- Linked fields redefined as free text
 - Acquisition, Author, Sponsor
- Bulk Date and Container fields added
- Hierarchy display tool sort order
 - Affects display and drag-drop
 - Manual work-around to allow data export



Image: Happy&Sad frog buttons, by ntr23; <http://www.flickr.com/photos/ntr23/4147620609/>

Internal Development Issues

- EAD template required changes
 - Ex.: Remove <unitdate> from <unittitle> string
- Physical location scheme
 - Divorce physical from intellectual location
 - Retain similarity to 3D object location scheme
- New screen layouts and reports
- Workflows and practices need modification
 - Record creation - who, what, when
 - Division of work between Registrars and Archives



Image: All-Staff Meeting Group, The Henry Ford, 28 January 2013

Different People Thinking in Different Ways

- Archivists
- Curators
- Registrars
- Program Manager
- Database Admin
- Network Admin
- Software Vendor
- Top down – Bottom up
- Hierarchical – Flat
- Aggregate – Granular
- Collection – Item
- Client – Vendor

More Differences...

- Rules
 - CCO
 - DACS
- Schema
 - CDWA Lite
 - EAD
- Practices
 - LOC
 - OAC
- Regions
 - US
 - Canada
 - Europe
 - Australia
- Terms
 - Provenance
 - Date ranges
 - Bulk date

...But, Commonalities Too.

- We all want the same things
 - More information available
 - Easier ways to work
 - Happy management
- Everyone is learning the System

Be Prepared

- Lots of Archives-splainin'
 - Learning Lunches
- Instances of AT and ArchivesSpace
- Read up on museum practice
- Compromise
- Hold to Core Principles
- Network



Management in a Museum CMS is...

- Bringing together the Archives and Museum
- Technology *and* People
- Thinking in new or different ways
- Understanding and working through differences
- A lot of discussion
- Making connections
- ***Possible***



Image: emu n cat.jpg; <http://www.backyardchickens.com/g/i/4942850/emu-n-cat-jpg/>

Thank you.

Brian Wilson
Benson Ford Research Center
The Henry Ford
Dearborn, Michigan
brianw@thehenryford.org
@brilwil

Take it Forward.™

the
**Henry
Ford**®